

# OFFICER CENTRAL STAGE 5 YOURLAND

## GENERAL NOTES:

### SURVEY

- ALL LEVELS ARE TO AUSTRALIAN HEIGHT DATUM AND ALL COORDINATES ARE TO MAP GRID OF AUSTRALIA (MGA) 94, ZONE 55.
- ALL EXISTING SURFACE LEVELS SHOWN ON THE ENGINEERING DRAWINGS HAVE BEEN INTERPOLATED FROM A DIGITAL TERRAIN MODEL. THESE LEVELS HAVE BEEN USED AS THE BASIS FOR ALL ENGINEERING DESIGN AND DETERMINATION OF QUANTITIES AND ARE ACCURATE TO WITHIN ±0.05m.
- ALL WORKS TO BE CARRIED OUT IN ACCORDANCE WITH AS2124-1992 GENERAL CONDITIONS OF CONTRACT, THE ROAD & DRAINAGE SPECIFICATION, APPROVED MUNICIPALITY SPECIFICATIONS AND STANDARD DRAWINGS AND TO THE SATISFACTION OF THE SUPERINTENDENT AND THE MUNICIPAL ENGINEER OR HIS REPRESENTATIVE.
- ROAD CHAINAGES REFER TO ROAD CENTRELINES. CHAINAGES FOR INTERSECTIONS AND CUL-DE-SACS REFER TO THE LIP OF KERB.

### EARTHWORKS

- THE LOCATION OF EXISTING SERVICES SHOULD BE DETERMINED BY THE CONTRACTOR PRIOR TO COMMENCING ANY EXCAVATION BY CONTACTING ALL LOCAL SERVICE AUTHORITIES. ANY EXISTING SERVICES SHOWN ON THESE DRAWINGS ARE OFFERED AS A GUIDE ONLY AND ARE NOT GUARANTEED AS CORRECT.
- WHERE REQUIRED ANY BUILDINGS, TRENCHES, FENCES AND OTHER STRUCTURES ON SITE ARE TO BE REMOVED AS DIRECTED BY THE ENGINEER. THE COST OF REMOVAL IS TO BE INCLUDED IN THE OVERALL EARTHWORKS FIGURE UNLESS A SPECIFIC ITEM FOR REMOVAL IS DENOTED IN THE SCHEDULE.
- ALL EXCAVATED ROCK AND SURPLUS SPOIL TO BE REMOVED AND DISPOSED OFF SITE UNLESS NOTED OTHERWISE.
- ALL FILLING ON LOTS AND WITHIN ROAD RESERVES GREATER THAN 200mm IS TO BE UNDERTAKEN USING LEVEL 1 SUPERVISION AND BE COMPLETED IN ACCORDANCE WITH AS 3798-2007. FILL AREAS ARE TO BE STRIPPED OF TOPSOIL, FILLED AND REPLACED WITH TOPSOIL (WHERE REQUIRED) TO OBTAIN THE FINAL LEVELS SHOWN ON THE DRAWINGS.
- FILLING MATERIAL IS TO BE IN ACCORDANCE WITH THE SPECIFICATION, AS 3798-2007 & TO THE SATISFACTION OF COUNCIL AND THE SUPERINTENDENT.
- ALL BATTERS SHALL BE 1 IN 6, UNLESS OTHERWISE SHOWN.
- NO FILL OR STOCKPILING OF MATERIAL IS TO BE PLACED ON ANY RESERVE FOR PUBLIC OPEN SPACE UNLESS OTHERWISE DIRECTED OR APPROVED BY THE SUPERINTENDENT.
- TBM'S TO BE RE-ESTABLISHED BY THE LICENSED SURVEYOR IF FOUND TO BE MISSING AT THE COMMENCEMENT OF CONSTRUCTION. THE CONTRACTOR WILL BE RESPONSIBLE FOR CARE AND MAINTENANCE OF T.B.M.'S THEREAFTER.
- AT LEAST 3 DAYS PRIOR TO COMMENCING WORK ON EXCAVATIONS IN EXCESS OF 150m DEEP, A NOTIFICATION FORM MUST BE SENT TO WORKSAFE. THE CONTRACTOR IS TO COMPLY WITH WORKSAFE, THE MINES (TRENCHES) REGULATION 1982, THE MINES ACT 1958 AND OCCUPATIONAL HEALTH AND SAFETY ACT 1985, 2004.
- ALL SERVICE TRENCHES UNDER DRIVEWAYS, FOOTPATHS AND PARKING BAYS TO BE BACKFILLED WITH CLASS 2 CRUSHED ROCK. SERVICE TRENCHES LESS THAN 750mm BEHIND KERB AND CHANNEL OR PAVED TRAFFIC AREAS ARE ALSO TO BE BACKFILLED WITH COMPACTED CLASS 2 CRUSHED ROCK.
- WHERE REQUIRED, ALL EXISTING DAMS, DEPRESSIONS AND DRAINS ARE TO BE BREACHED, DRAINED, DESLUDGED AND SHALL BE EXCAVATED TO A CLEAN FIRM BASE. THE SURFACE SHALL BE INSPECTED, APPROVED AND LEVELED BY THE ENGINEER PRIOR TO COMMENCEMENT OF FILLING. THE FILL SHALL BE APPROVED SELECTED ON SITE MATERIAL OR APPROVED IMPORTED MATERIAL. THE FILL SHALL BE PLACED UNDER CONTROLLED MOISTURE CONDITIONS IN ACCORDANCE WITH THE SPECIFICATION.
- NO BLASTING TO BE CARRIED OUT WITHIN THE MUNICIPALITY WITHOUT OBTAINING COUNCIL'S PERMISSION.

### SERVICES

- GAS AND WATER CONDUITS ARE TO BE:  
Ø50mm . CLASS 12 P.V.C. - SINGLE SERVICE  
Ø100mm . CLASS 12 P.V.C. - DUAL SERVICE (DRINKING AND NON DRINKING WATER)

WITH THE FOLLOWING MINIMUM COVER TO FINISHED SURFACE LEVELS:  
ROAD PAVEMENT - 0.80m  
VERGE, FOOTPATHS - 0.45m

LOCATION OF THE CONDUITS TO BE MARKED ON THE FACE OF KERB ON EACH SIDE OF THE ROAD WITH A 50mm HIGH LETTER (G FOR GAS, W FOR WATER, E FOR ELECTRICITY AND T FOR TELECOMMUNICATIONS).

- ALL SERVICE CONDUIT TRENCHES UNDER ROAD PAVEMENTS TO BE BACKFILLED IN ACCORDANCE WITH RELEVANT MUNICIPALITY OR ROAD AUTHORITY SPECIFICATION.
- WATER TAPPINGS TO BE LOCATED IN CENTRE OF ALLOTMENTS UNLESS OTHERWISE SHOWN.

### STORM WATER DRAINAGE

- AG/SUBSOIL DRAIN TO BE LAID BEHIND KERB WHERE REQUIRED IN ACCORDANCE WITH THE COUNCIL STANDARD DRAWINGS AND CONNECTED TO UNDERGROUND DRAINAGE.
- ALL STORMWATER DRAINS ARE TO BE CLASS '2' R.C. PIPES UNLESS OTHERWISE SHOWN. ALL R.C. JOINTS ARE TO BE RUBBER RING JOINTED (R.R.J) UNLESS OTHERWISE SHOWN.

- CENTRELINES OF ALL EASEMENT DRAINS ARE OFFSET 1.0m OR 2.3m (WHERE OUTSIDE OF SEWER) FROM THE PROPERTY LINE UNLESS SHOWN OTHERWISE.
- WHERE CURVED PIPES ARE SHOWN ON THE FACE PLANS THEY ARE TO BE LAID PARALLEL TO THE BACK OF KERB, EXCEPT WHERE A RADIUS HAS BEEN SPECIFICALLY NOMINATED. CURVED PIPES ARE TO BE APPROVED BY COUNCIL AND IN ACCORDANCE WITH THE MANUFACTURERS SPECIFICATIONS.

- CCTV RESULTS FOR THE FULL LENGTH OF ALL STORMWATER DRAINAGE PIPES WHERE CARDINIA SHIRE COUNCIL IS RESPONSIBLE AUTHORITY MUST BE SUBMITTED FOR ASSESSMENT. SUBMITTED INFORMATION IS TO BE TO THE SATISFACTION OF THE RESPONSIBLE AUTHORITY. CCTV FOOTAGE TO BE PROVIDED BY CONTRACTOR BEFORE THE ROADS ARE PRIMED AND / OR ASPHALTED. ALL DAMAGED PIPES UNDER ROADS MUST BE REPAIRED AND INSPECTED PRIOR TO THE PRIMING AND ASPHALTING OF THE ROAD AND BEFORE A CERTIFICATE OF PRACTICAL COMPLETION IS ISSUED.

### PAVEMENT

- PAVEMENT DEPTHS MAY BE MODIFIED AS DIRECTED BY THE SUPERINTENDENT. PAVEMENT TO BE BOXED OUT TO MINIMUM DEPTH DENOTED, INSPECTED AND IF SUBGRADE IS IN QUESTION, FURTHER TESTING CARRIED OUT TO DETERMINE FINAL PAVEMENT DEPTH.
- WHERE PAVEMENT IS CONSTRUCTED ON FILLING, FILL MATERIAL IS TO BE APPROVED BY THE SUPERINTENDENT AND COUNCIL. FILLING TO BE CONSTRUCTED IN LAYERS 150mm THICK WITH COMPACTION ACHIEVING 95% AUSTRALIAN STANDARD DENSITY.
- WHEN PAVEMENT EXCAVATION IS IN ROCK ALL LOOSE MATERIAL INCLUDING ROCKS AND CLAY MUST BE REMOVED. THE SUB-GRADE MUST THEN BE REGULATED WITH COUNCIL APPROVED MATERIAL.

### SIGNAGE AND LINEMARKING

- LINEMARKING AND SIGNAGE TO BE INSTALLED IN ACCORDANCE WITH AS 1742 SERIES UNLESS NOTED OTHERWISE. STREET SIGNS ARE TO BE INSTALLED IN ACCORDANCE WITH COUNCIL STANDARDS.
- ALL TEMPORARY WARNING SIGNS USED DURING CONSTRUCTION SHALL BE SUPPLIED AND MAINTAINED IN ACCORDANCE WITH AS 1742-3.
- TACTILE GROUND SURFACE INDICATORS ARE TO BE INSTALLED IN ACCORDANCE WITH THE DISABILITY DISCRIMINATION ACT AND RELEVANT COUNCIL STANDARD DRAWINGS.

### ENVIRONMENTAL

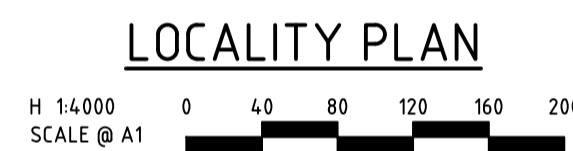
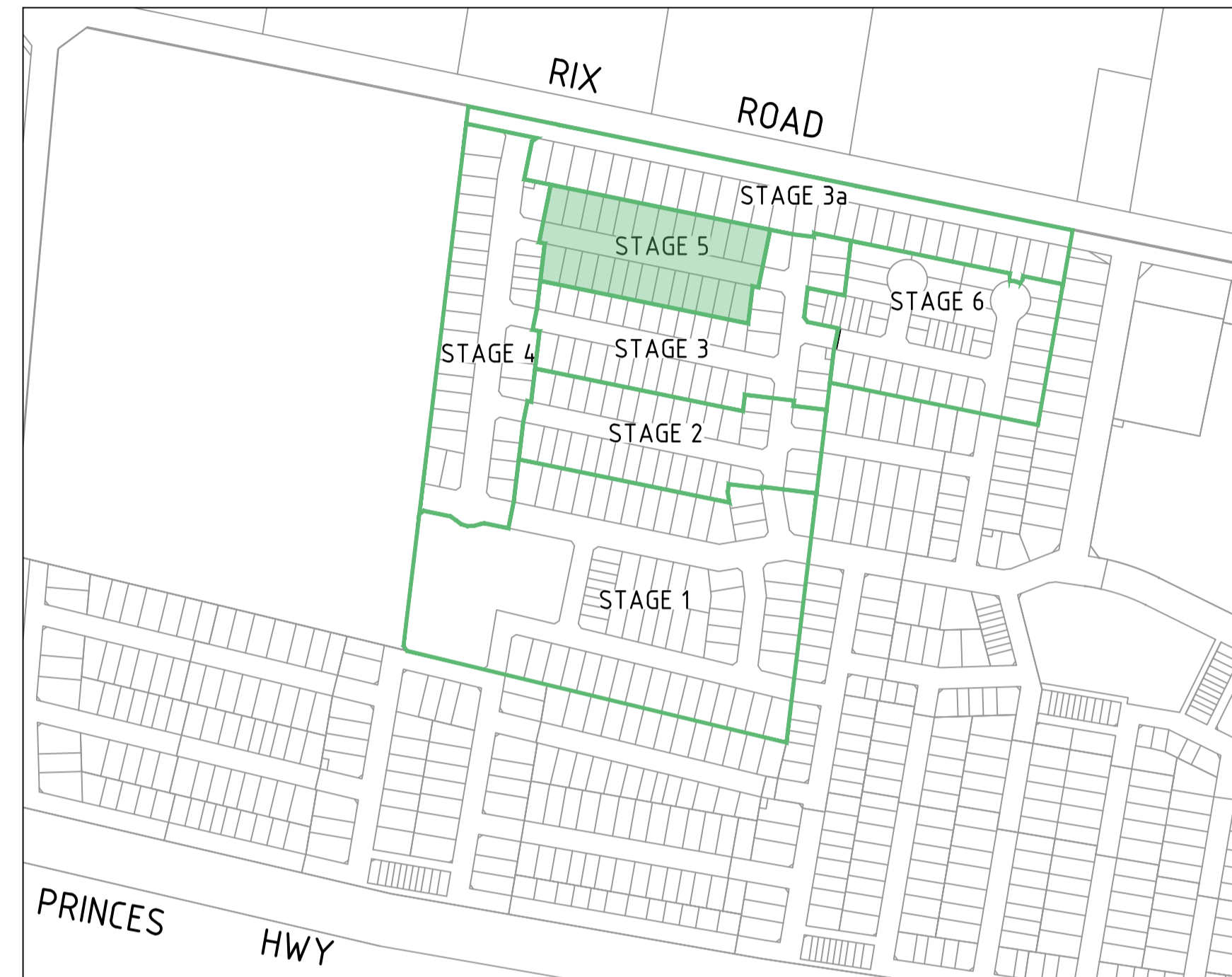
- CONTRACTOR TO PROVIDE AN ENVIRONMENTAL MANAGEMENT PLAN INCLUDING SILT AND SEDIMENT RUNOFF PROTECTION ETC. PRIOR TO THE COMMENCEMENT OF WORKS.
- ALL TREES AND SHRUBS ARE TO BE RETAINED UNLESS OTHERWISE SHOWN. IF ROAD AND DRAINAGE CONSTRUCTION NECESSITATES THEIR REMOVAL, WRITTEN PERMISSION MUST BE OBTAINED FROM THE SUPERINTENDENT.
- TREES NOT SPECIFIED FOR REMOVAL ARE TO BE PROTECTED WITH APPROPRIATE EXCLUSION FENCING PRIOR TO COMMENCEMENT OF ANY WORKS.

### MISCELLANEOUS

- PROVIDE REFLECTIVE STREET NUMBER MARKERS ON THE KERB IN FRONT OF EACH LOT TO THE SATISFACTION OF COUNCIL.
- UPON COMPLETION OF THE CIVIL WORKS, THE CONTRACTOR SHALL PROVIDE AS CONSTRUCTED PLANS IN AUTOCAD, D-SPEC AND R-SPEC DIGITAL FORMAT TO COUNCIL'S REQUIREMENTS AND TO THE SATISFACTION OF ALL PARTIES.
- HOUSE DRAIN LOCATIONS ARE TO BE STAMPED ON THE KERB FACE IN ACCORDANCE WITH VPA EDM303
- CONTRACTOR TO REFER TO AND COMPLY WITH CHMP / F&F REPORTS PROVIDED IN CONTRACT DOCUMENTS



**WARNING**  
BEWARE OF UNDERGROUND/OVERHEAD SERVICES  
THE LOCATION OF SERVICES ARE APPROXIMATE ONLY AND THEIR EXACT POSITION SHOULD BE PROVEN ON SITE. NO GUARANTEE IS GIVEN THAT ALL EXISTING SERVICES ARE SHOWN. SPECIAL CONSIDERATION SHOULD BE GIVEN TO CONSTRUCTION PROCEDURES UNDER OVERHEAD ELECTRICITY TRANSMISSION LINES.



## DRAWING SCHEDULE

DRAWING	DESCRIPTION	SHEET No.	REVISION
CR100	GENERAL NOTES - SHEET 1	1	0
CR200	ROAD LAYOUT PLANS - FACE PLAN	2	0
CR201	ROAD LAYOUT PLANS - EARTHWORKS PLAN	3	0
CR300	ROAD LONG SECTIONS - SHEET 1	4	0
CR400	ROAD CROSS SECTIONS - SHEET 1	5	0
CR600	DRAINAGE LONG SECTIONS - SHEET 1	6	0
CR700	PAVEMENT AND TYPICAL DETAILS - SHEET 1	7	0

## LEGEND

DESCRIPTION	EXISTING	PROPOSED
WATER MAIN, VALVE AND HYDRANT	DW	DW
WATER RECYCLED	NDW	NDW
UNDERGROUND ELECTRICITY	E	E
OVERHEAD ELECTRICITY & POLE	OE	OE
TELECOMMUNICATIONS & SERVICE PIT	T	T
OPTIC FIBRE	OF	OF
OVERHEAD TELECOMMUNICATIONS	OT	OT
GAS MAIN	G	G
BRANCH SEWER & MAINTENANCE STRUCTURE	S	S
SEWER & MAINTENANCE STRUCTURE	S	S
SEWER RISING MAIN	SRM	SRM
CENTRAL INVERT		
COUNCIL STORMWATER DRAIN AND PIT		
STORM WATER DRAINAGE PROPERTY INLETS		
COUNCIL STORM WATER PITS		
HOUSE DRAIN	H	H
AG DRAIN AND FLUSHER	AG	AG
MWC STORM WATER DRAIN & PIT		
MWC STORM WATER PITS		
STORM WATER DRAINAGE PIT NUMBER	Ex 4.7	1
GAS & WATER CONDUITS	GW	GW
CONCRETE VEHICLE CROSSING		
RIDGE / CHANGE OF GRADE LINE		
SURFACE CONTOUR MINOR	- 169.00 -	169.00
SURFACE CONTOUR MAJOR	- 168.90 -	168.90
SURFACE LEVEL	E123.45	F124.68
BATTER LEVEL (TOP / TOE)	T124.80	T124.80
RETAINING WALL LEVEL (TOP/BOTTOM)	TW112.76	TW128.50 BW126.74
EARTHWORKS GRADE		1 in 150
SIGN AND POST		
LIGHT & POLE (BY OTHERS)		
STREET SIGN		
PERMANENT SURVEY MARK		
TEMPORARY BENCH MARK		
BOLLARD		
ROAD CHAINAGES	CH116.57 (L/R)TP CH116.57	CH116.57 (L/R)TP CH116.57
LOT CHAINAGES	CH20.06	CH20.06
SETOUT POINT		A2
LIMIT OF WORKS		
BATTER		
EXCAVATION GREATER THAN 0.20m		
FILLING GREATER THAN 0.20m		
ROCK BEACHING		
RETAINING WALL		
FENCE - TREE PROTECTION		
FENCE - VEHICLE EXCLUSION		
FENCES		
GUARD RAIL		
TREE (& SURVEYED CANOPY) TO BE RETAINED		
TREE TO BE PROTECTED		
TREE TO BE REMOVED		
VEGETATION LINE		
FOOTPATH		
TACTILE GROUND SURFACE INDICATOR		
KERB TRANSITION		B2   SM2

file name: 309133CR100.dwg, layout name: CS100, plotted by: Suresh, Cellno: 081330309133, title: LOCAL PLAN, plot date: 29/09/2022 10:09 AM, Sheet: 1 of 7 Sheets

Rev	Amendments	Approved	Date
0	ISSUED FOR CONSTRUCTION	B.W	29/09/22
A	PRELIMINARY ISSUE	B.W	07/02/22

System Certified
   
 © Spiire Australia Pty Ltd All Rights Reserved
   
This document is produced by Spiire Australia Pty Ltd solely for the benefit of and use by the client in accordance with the terms of the retainer. Spiire Australia Pty Ltd does not and shall not assume any responsibility or liability whatsoever to any third party arising out of any use or reliance by third party on the content of this document.

16 BRIDGE STREET BENDIGO  
 VICTORIA 3550 AUSTRALIA T 61 3 5448 2500  
 spiire.com.au ABN 55 050 029 635

Designed  
 S.SALHAN
   
 Authorised  
 B.WAREHAM
   
 Checked  
 B.IBBS
   
 Date  
 29/09/2022

**OFFICER CENTRAL  
STAGE 5  
ROAD AND DRAINAGE  
GENERAL NOTES  
CARDINIA SHIRE  
YOURLAND**
  
  
 Drg No  
**309133CR100**
  
 Rev  
**0**



FILL GREATER THAN 200mm



REMOVE TEMPORARY EDGESTRIP, TURNING AREA, BOLLARDS AND "ROAD CLOSED" SIGNAGE AND MATCH TO EXISTING

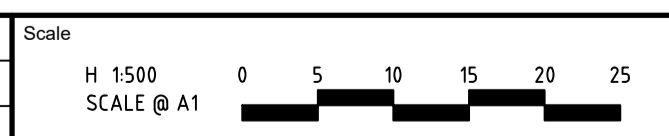
REMOVE TEMPORARY EDGESTRIP, TURNING AREA, BOLLARDS AND "ROAD CLOSED" SIGNAGE AND MATCH TO EXISTING



**WARNING**  
BEWARE OF UNDERGROUND/OVERHEAD SERVICES  
THE LOCATION OF SERVICES ARE APPROXIMATE ONLY AND THEIR EXACT POSITION SHOULD BE PROVEN ON SITE. NO GUARANTEE IS GIVEN THAT ALL EXISTING SERVICES ARE SHOWN. SPECIAL CONSIDERATION SHOULD BE GIVEN TO CONSTRUCTION PROCEDURES UNDER OVERHEAD ELECTRICITY TRANSMISSION LINES.

file: \\spire\309133CR201.dwg, layout: rns, csp: 01, plotted by: Saurav, C:\Users\spire\Documents\spire\309133.dwg, plot date: 29/09/2022 10:09 AM, Sheet: 3 of 7 Sheets

Rev	Amendments	Approved	Date
0	ISSUED FOR CONSTRUCTION	B.W	29/09/22
A	PRELIMINARY ISSUE	B.W	07/02/22



© Spiire Australia Pty Ltd All Rights Reserved  
This document is produced by Spiire Australia Pty Ltd solely for the benefit of and use by the client in accordance with the terms of the retainer. Spiire Australia Pty Ltd does not and shall not assume any responsibility or liability whatsoever to any third party arising out of any use or reliance by third party on the content of this document.



16 BRIDGE STREET BENDIGO  
VICTORIA 3550 AUSTRALIA T 61 3 5448 2500  
spiire.com.au ABN 55 050 029 635



Designed  
S.SALHAN  
Authorised  
B.WAREHAM

Checked  
B.IBBS  
Date  
29/09/2022

**OFFICER CENTRAL  
STAGE 5  
ROAD AND DRAINAGE  
ROAD LAYOUT PLANS - EARTHWORKS PLAN**  
CARDINIA SHIRE  
YOURLAND

**CONSTRUCTION** Drg No **309133CR201** Rev **0**







**DESIGN PAVEMENT PROFILE**

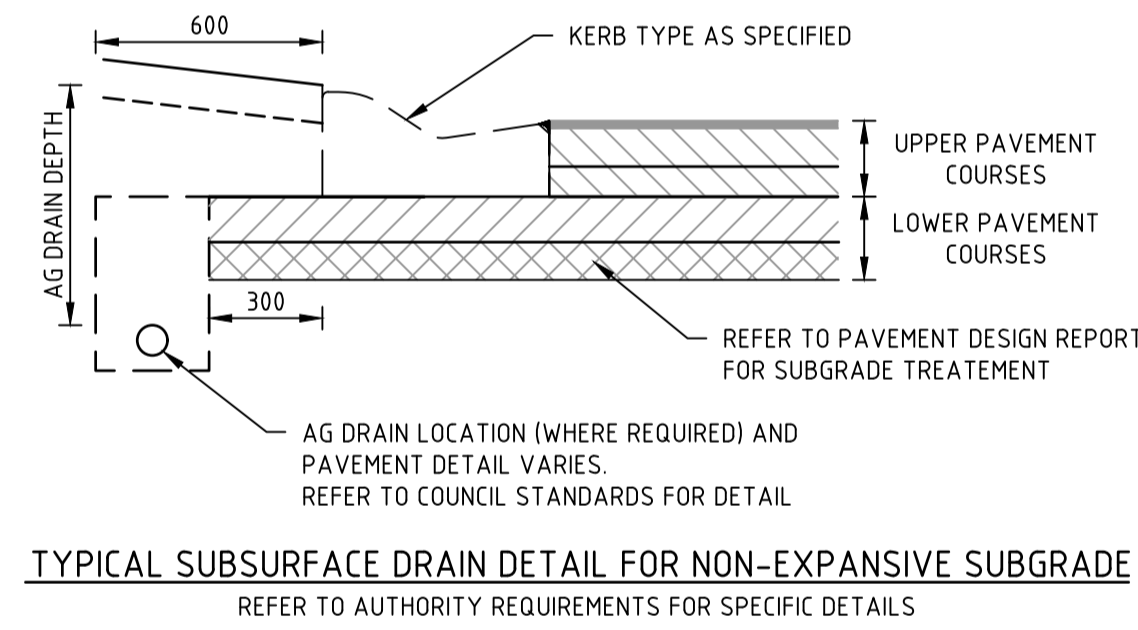
PAVEMENT LAYER	DESCRIPTION	DEPTH (mm)
		TYPE B* (ACCESS STREET Level 1)
ASPHALT WEARING COURSE	VICROADS SIZE 10 TYPE N CLASS C170 BINDER	30
ASPHALT BASE COURSE	VICROADS SIZE 10 TYPE N CLASS C170 BINDER	30
BITUMINOUS PRIME	NOMINAL	NOMINAL
BASE	VICROADS 20mm CLASS 2 CRUSHED ROCK OR EQUIVALENT	130
UPPER SUBBASE	VICROADS 20mm CLASS 3 CRUSHED ROCK OR BETTER, 20mm CLASS CC3 CRUSHED CONCRETE OR BETTER	100
LOWER SUBBASE	VICROADS CLASS 4 CRUSHED ROCK OR BETTER, CLASS CC3 CRUSHED CONCRETE OR BETTER	160
SUBGRADE	SILTY CLAY WITH DESIGN CBR OF 35%	
<b>TOTAL PAVEMENT DEPTH</b>		<b>450</b>

\* REFER PAVEMENT PLAN FOR LOCATION OF PAVEMENT TYPES

ROAD NAME	TYPE
BOOTLACE ROAD	B

**GENERAL NOTES:**

- ALL WORKS TO BE COMPLETED IN ACCORDANCE WITH RELEVANT AUSTRALIAN STANDARDS AND CCA LITERATURE, OR VIC ROADS STANDARDS FOR NON RESIDENTIAL STREETS.
- ALL CONCRETE TO BE MINIMUM 32MP<sub>a</sub> COMPRESSIVE STRENGTH
- CONCRETE TO BE THOROUGHLY COMPACTED USING EITHER SURFACE AND/OR IMMERSION VIBRATORS, PARTICULARLY AROUND REINFORCEMENT AND IN CORNERS OF FORMS.
- PRIOR TO CASTING, THE UNBOUND GRANULAR SUBBASE MUST BE DAMP TO ENSURE NO EARLY "DRYING OUT" OF THE CONCRETE.
- CURING OF CONCRETE IS ESSENTIAL - IDEALLY BY MAINTAINING WET HESSIAN OR SEALING WITH PLASTIC SHEETING.
- SAW CUTTING OF CONCRETE SHOULD BE COMMENCED AS SOON AS CONCRETE PERMITS BY EXPERIENCED CONTRACTORS, BUT NO LATER THAN 12 HOURS AFTER POUR.
- ALL DOWELS TO BE GRADE 250R STEEL BARS, 450mm LONG AND PLACED AT 300mm CENTRES. REFER CCAA- "CONCRETE PAVEMENT DESIGN FOR RESIDENTIAL STREETS" FOR DOWEL DIAMETERS. DOWELS MUST BE ACCURATELY PLACED TO ENSURE THE JOINT DOES NOT "LOCK". INSERTION OF DOWELS DURING THE PLACING OF CONCRETE IS NOT ACCEPTABLE. DOWELS MUST BE SAWN AND NOT CROPPED.
- ALL JOINTS TO BE APPROPRIATELY SEALED TO RESIST THE INTRUSION OF SAND AND GRAVEL AND TO MINIMISE THE INGRESS OF WATER.



NOT TO SCALE

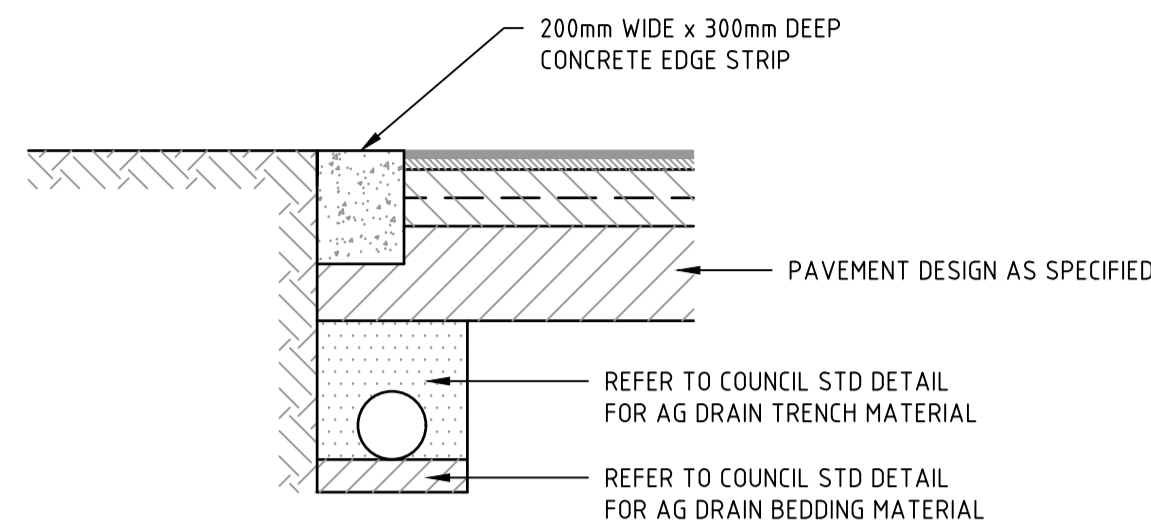
**PAVEMENT DETAILS**

THE PAVEMENT DESIGNS SHOWN HERE HAVE BEEN DESIGNED/PROVIDED BY COFFEY WHO ARE RESPONSIBLE FOR THE GEOTECHNICAL WORK ON THIS PROJECT. SPIIRE IS NOT RESPONSIBLE FOR THE WORK OF COFFEY.

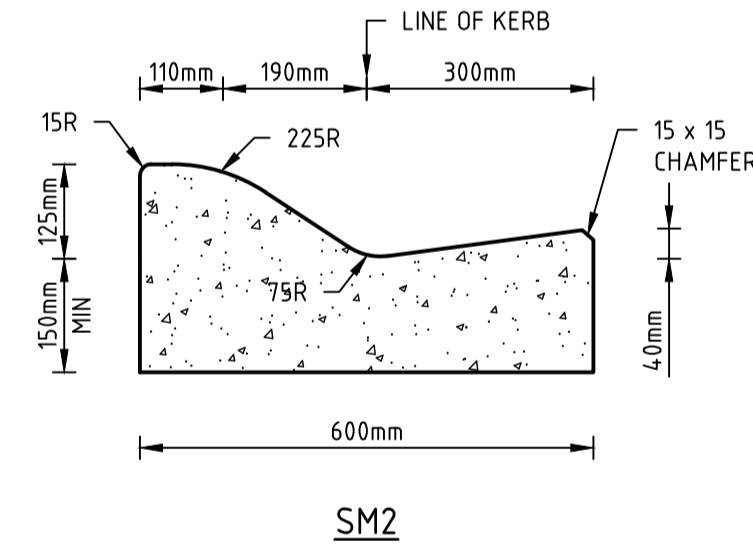
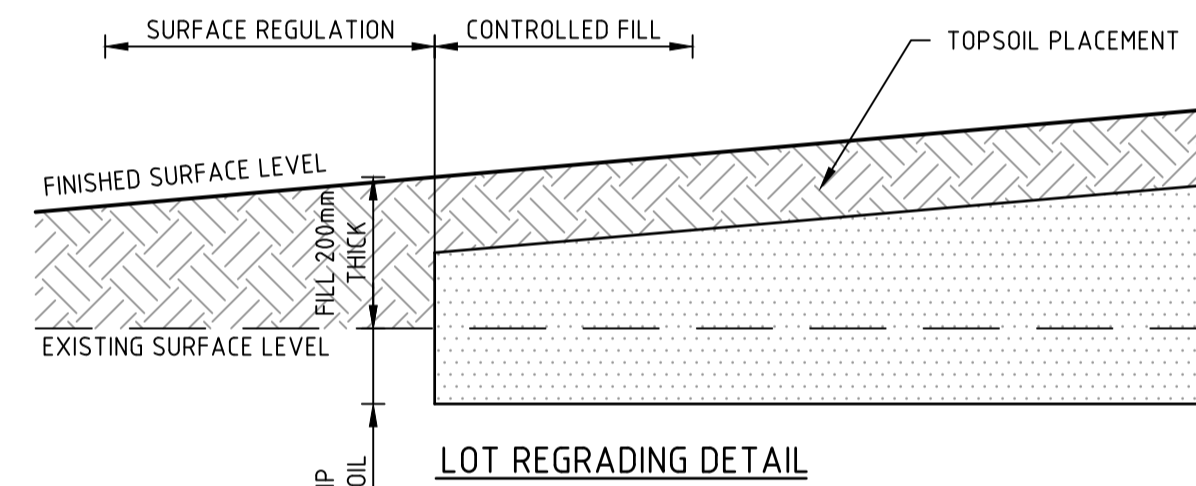
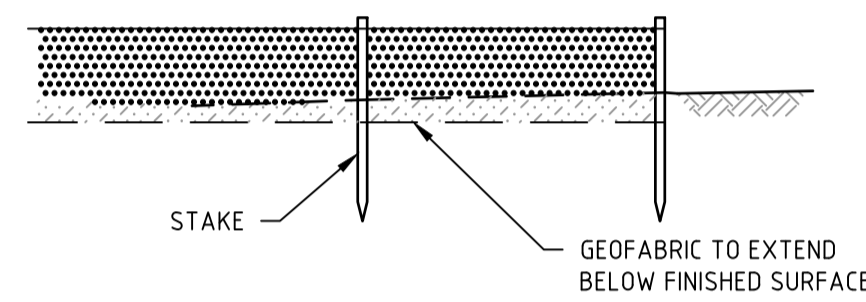
THE DESIGN HAS BEEN EXTRACTED FROM THE LOT 2 45-51 RIX ROAD, OFFICER - GEOTECHNICAL INVESTIGATION AND PAVEMENT DESIGN REPORT ON "GEOTECHNICAL INVESTIGATION FOR OFFICER CENTRAL" THIS DOCUMENT SHOULD BE REVIEWED TO ENSURE THAT THE DESIGN HAS BEEN ACCURATELY REPRODUCED.

A COPY OF THE DOCUMENT WILL BE PROVIDED ON REQUEST.

SPIIRE DOES NOT ACCEPT ANY RESPONSIBILITY FOR THE ACCURACY, ADEQUACY OR APPROPRIATENESS OF THE GEOTECHNICAL WORK AND PAVEMENT DESIGNS. ANY QUERIES IN RESPECT TO THE GEOTECHNICAL WORK AND PAVEMENT DESIGNS SHOULD BE ADDRESSED TO COFFEY AND COPIED TO SPIIRE.

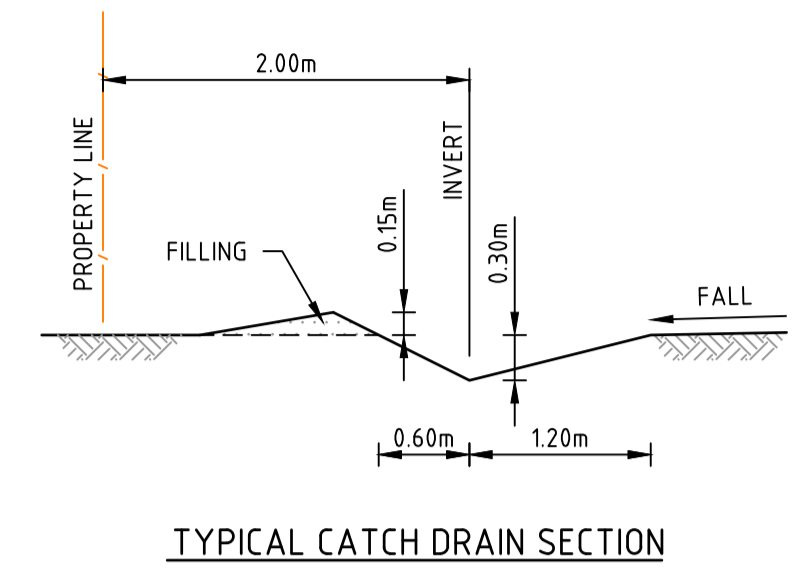
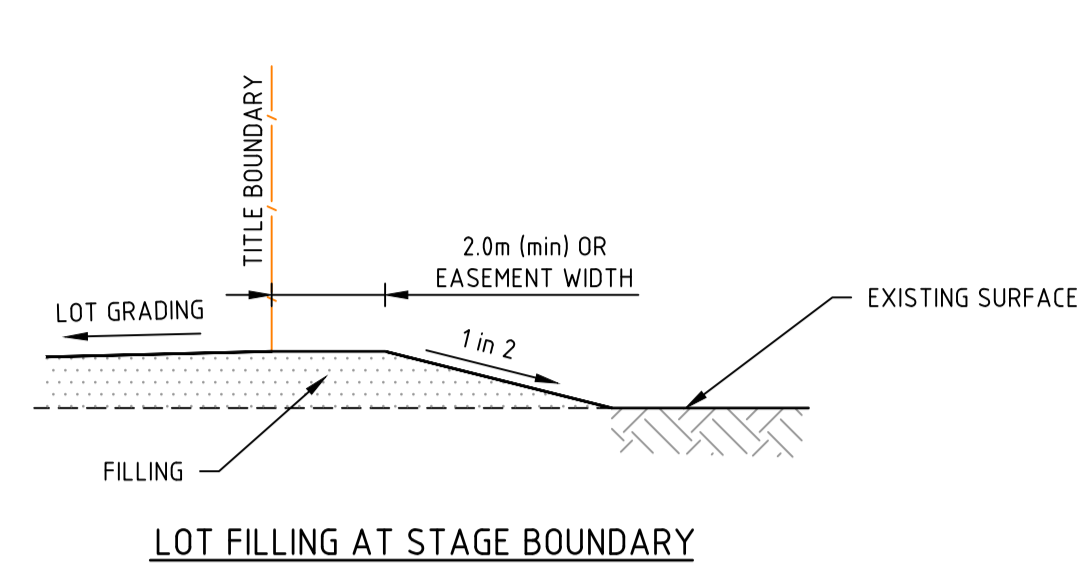


**LIMIT OF WORKS CONCRETE EDGE STRIP & PAVEMENT INTERFACE DETAIL**



**STANDARD KERB PROFILES**

NOTE: ALL KERB & CHANNEL AS PER GAA STD DRAWING EDCM 301



NOT TO SCALE



**PAVEMENT PLAN**



file name: 309133CR700.dwg; layout: title; cadd: C:\Users\csh300\OneDrive\Documents\309133CR700.dwg; plot date: 29/09/2022 10:09 AM; sheet: 7 of 7 sheets

Rev	Amendments	Approved	Date
0	ISSUED FOR CONSTRUCTION	B.W	29/09/22
A	PRELIMINARY ISSUE	B.W	07/02/22

Scale

System Certified

© Spiire Australia Pty Ltd All Rights Reserved  
This document is produced by Spiire Australia Pty Ltd solely for the benefit of and use by the client in accordance with the terms of the retainer. Spiire Australia Pty Ltd does not and shall not assume any responsibility or liability whatsoever to any third party arising out of any use or reliance by third party on the content of this document.

16 BRIDGE STREET BENDIGO  
VICTORIA 3550 AUSTRALIA T 61 3 5448 2500  
spiire.com.au ABN 55 050 029 635

Designed: S.SALHAN  
Authorised: B.WAREHAM  
Checked: B.IBBS  
Date: 29/09/2022

**OFFICER CENTRAL**  
**STAGE 5**  
**ROAD AND DRAINAGE**  
**PAVEMENT AND TYPICAL DETAILS**  
 CARDINIA SHIRE  
 YOURLAND

**CONSTRUCTION**

Drg No: 309133CR700  
 Rev: 0